

# Starrett®

## SAW SOLUTIONS

### INTENS<sup>SM</sup> PRO

#### OPTIMUM CUTTING EFFICIENCY IN HIGH-PRODUCTION APPLICATIONS.

Intens PRO band saw blades are ideal for production cutting operations across a wide range of metals. They feature a tooth design with a positive rake angle and variable pitch for optimal cutting efficiency in sustained, high-production applications.

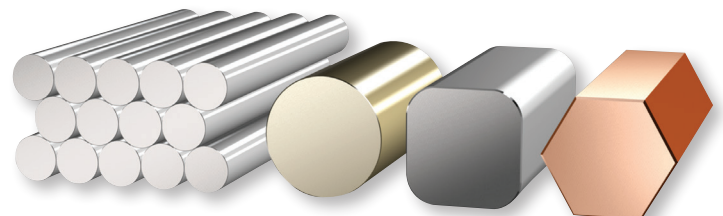
- Ideal for production cutting across a wide range of metals.
- For solids and thick wall tubes.
- Ideal for production cutting of steels up to 45HRc, tool and stainless steels, nickel-based and non-ferrous alloys.

#### BENEFITS

- Faster and straighter cuts.
- Improved fatigue and wear resistance.
- Easy penetration, excellent chip clearance and reduced noise levels.
- High-quality surface finish for faster and straighter cuts.

#### FEATURES

- Complete line with a wide range of widths and pitches to suit a wide variety of cutting needs.
- Unique tooth geometry provides intense production cutting in ferrous and non-ferrous metals.
- Intens PRO is made with triple-tempered, high-speed M-42 cobalt steel teeth combined with a fatigue-resistant alloy steel backing strip.



Starrett® Intens<sup>SM</sup> PRO

Blade Width x Thickness		Blade Pitch with Material Numbers								
Inch	mm	.8-1.3/P	1-1.2/P	1.4-2/P	2-3/P	3/P	3-4/P	4-6/P	5-8/P	6-10/P
3/4 x .035	19 x 0.90						99191	99902	99903	99206
1 x .035	25 x 0.90				99905	99484	99906	99907	99908	99318
1-1/4 x .042	32 x 1.10				99912		99913	99914	99915	99500
1-1/2 x .050	38 x 1.30		99917		99923		99924	99926	99927	
2 x .063	50 x 1.30	99928		99931	99932		99933			
2-5/8 x .063	67 x 1.30	99934	99937	99941						
3-1/8 x .063	79 x 1.30	99942	99943	99947						

P = Positive Rake

Furnished in welded bands for all widths, or in random coils for 3/4" to 1-1/2" widths.

3/4" to 1-1/4" sizes available in 250' (76m) coils. 1-1/2" to 2" sizes available in 150' (45m) coils. 2-5/8" and larger in welded blades only.

Note: Special products on request.

